

## **Appendix A**

**Appendix A**

**Table A-1 Community Facilities within 0.5 miles of Central/10<sup>th</sup>-11<sup>th</sup> Street Corridor**

<b>Type</b>	<b>Name</b>	<b>Address</b>
Long Term Care	Wedow Private Home Care	602 Spring St
Emergency/Fire/Police	Michigan City Fire Department Station 1	1012 Ohio St
	no police stations	
Medical Care	St Anthony Memorial Hospital & Health Centers	301 W Homer St
	LaPorte County WIC Program	301 E 8th St
Historic Districts	Elston Grove Historic District	between Wabash, 4th, Michigan, 11th
	Franklin Street Historic District	
	Wabash Street Historic District	
Libraries	none	
Museums	none	
Parks & Recreational Facilities	Chicago St Playground	Chicago St @ Hitchcock St
	Trail Creek Marina	E Michigan Blvd @ E 7th St
	Park Elementary School Park	222 McClelland Ave
	Hansen Park	100 E St
	Cleveland Park	300 Cleveland Ave
	Ridgeland Park	620 Ridgeland Ave
	Marsh Elementary School Park	400 E Homer St
	Krueger Memorial Park	801 Liberty
	Trail Creek Marina	700 E Michigan Blvd
	Jerrigan's Hill Park	801 E 8th St
	Mount Baldy	Lakefront
	Winding Creek Cove	1400 E 8th St
	Elston Middle School Park	317 Detroit St
	West 8th Street Park	1501 W 8th St
	Walker Street Park	900 Walker St
	Pullman Park	550 W 4th St
Trails	none	
	<i>Five Planned Trails</i>	
Religious Centers	St Mary Roman Catholic Church	310 W 10th St
	First Christian Church	1102 Cedar St
Schools	Elston Middle School	317 Detroit St
	Marsh Elementary School	400 E Homer St

---

## EXISTING CONDITONS REPORT

	A K Smith Area Career Center	817 Lafayette St
	Saint Stanislaus Kostka School	1506 Washington St
	Marquette High School	306 W 10th St
	Cornerstone Community Christian	301 E 9th St
	Schools Parochial Saint Paul	818 Franklin St
Prisons	Lakeside Correctional Facility	201 Woodlawn Ave
Cemeteries	none	

**Table A-2 Community Facilities within 0.5 miles of South/CSX Corridor**

Type	Name	Address
Long Term Care	Alterra Sterling House of Michigan City (Residential Care Facility)	1400 E Coolspring Ave
	Arbors at Michigan City (Nursing Home)	1101 E Coolspring Ave
	St Anthony Hospice	2424 Franklin St
	VNA Homecare, Private Duty, and Hospice	901 S Woodland Ave
Emergency/Fire/Police	Michigan City Fire Dept Administration Offices & Training Center	2510 E Michigan Blvd
	no police stations	
	LaPorte County Emergency Medical Services	201 W Coolspring Ave
Medical Care	St Anthony Memorial Hospital & Health Centers	301 W Homer St
	Medical Group Surgery Center LLC	1225 E Coolspring Ave
Historic Districts	none	
Libraries	none	
Museums	none	
Parks & Recreational Facilities	Chicago St Playground	Chicago St @ Hitchcock St
	Michigan City Municipal Golf Course North	675 Warnke Rd
	Michigan City Municipal Golf Course South	4000 E Michigan Blvd
	Zilla Square Park	300 E Barker ave
	Martin T Krueger Middle School Park	2001 Springland Ave
	Ames Field	Pytnia Parkway
	Knapp Elementary School Park	321 Bolka Ave
	Marsh Elementary School Park	400 E Homer St
	Water Tower Park	301 Broadway
	Nelson Park	198 Whipperwhill
	Joy Elementary School Park	1600 E Coolspring Ave
	Gardena Park	900 Gardena
	Trail Creek Public Fishing Area	E Coolspring Ave & Chapala Pkwy
	Indiana Dunes National Lakeshore	along County Line Rd and west along lakefront
	Karwick Nature Park	700 S Karwick Rd
YMCA	1001 E Coolspring Ave	
Trails	Striebel Pond Trail (asphalt)	Earl Rd & Hitchcock St
	Gardena Park Trail (asphalt)	Gardena St & Wrobel Ave

## EXISTING CONDITONS REPORT

	Calumet Trail (crushed stone rail trail)	near County Line Rd & Everett St, west along Chicago South Shore & South Bend RR
	<i>Seven Planned Trails</i>	
Religious Centers	CJCLDS Michigan City	E Coolspring Ave & Maple St
	Sinai Temple	Franklin St @ Superior St
Schools	Martin T Krueger Middle School	2001 Springland Ave
	Marsh Elementary School	400 E Homer St
	Knapp Elementary School	321 Bolka Ave
	Joy Elementary School	1600 E Coolspring Ave
	Duneland Lutheran High School	1237 E Coolspring Ave
	Queen of All Saints School	1715 E Barker Ave
	Queen of All Saints School	526 S Woodland Ave
	Michigan City Area Schools	408 S Carroll Ave
Prisons	Lakeside Correctional Facility	201 Woodlawn Ave
Cemeteries	Greenwood Cemetery	Greenwood Ave & Jackson St
	Saint Stanistaus Cemetery	Wrobel Ave & Greenwood Ave

**Table A-3 Community Facilities within 0.5 miles of North Corridor**

<b>Type</b>	<b>Name</b>	<b>Address</b>
Long Term Care	Wedow Private Home Care	602 Spring St
	Michigan City Fire Department Administration	2510 E Michigan Blvd
	LaPorte County Sheriff	300 Washington St
	Michigan City Police Department	102 W 2nd St
	LaPorte County WIC Program	301 E 8th St
Historic Districts	Elston Grove Historic District	between Wabash, 4th, Michigan, 11 <sup>th</sup>
	Franklin Street Historic District	
	Wabash Street Historic District	
Libraries	Michigan City Public Library	100 E 4th St
Museums	Old Lighthouse Museum	1 Washington Park Marina
Parks & Recreational Facilities	Outer Basin Harbor	Lakefront @ Water St
	Trail Creek Marina	E Michigan Blvd @ E 7th St
	Hansen Park	100 E St
	Canada Park	300 Center St
	Cleveland Park	300 Cleveland Ave
	Ridgeland Park	620 Ridgeland Ave
	Pottawatomie Park Garden and Pontiac Park	Pontiac Dr @ Garden Trail
	Mullen Elementary School Park	100 Manny Court
	Krueger Memorial Park	801 Liberty
	Trail Creek Marina	700 E Michigan Blvd
	Old Waterworks	Water St @ Harbor
	DNR Building	100 W Waters St
	Jerrigan's Hill Park	801 E 8th St
	Mount Baldy	Lakefront
	Winding Creek Cove	1400 E 8th St
	Elston Middle School Park	317 Detroit St
	West 8th Street Park	1501 W 8th St
	Water Tower Park	301 Broadway
	Washington Park & Zoo	6 on the Lake
	Indiana Dunes National Lakeshore	Lakefront
Millenium Plaza	55 Franklin St	
Michigan City Fish & Wildlife Headquarters	Franklin St & Marine Dr	

## EXISTING CONDITONS REPORT

	Robert Peo Public Fishing Area	Old Liberty Trail
	Walker Street Park	900 Walker St
	Pullman Park	550 W 4th St
Trails	Calumet Trail (crushed stone rail trail)	near County Line Rd & Everett St, west along Chicago South Shore & South Bend RR
	<i>Eight Planned Trails</i>	
Religious Centers	First Christian Church	1102 Cedar St
Schools	Elston Middle School	317 Detroit St
	Mullen Elementary School	100 Manny Court
	A K Smith Area Career Center	817 Lafayette St
	Cornerstone Community Christian	301 E 9th St
	Michigan City Area Administration	498 S Carroll Ave
	Schools Parochial Saint Paul	818 Franklin St
Prisons	none	
Cemeteries	none	

**Michigan City 2010 Census Data - Households**

- Michigan City has a total of 12,136 households, 58.9% (or 7,147 households) of which are families.
- Over a quarter of households (25.7%) have children under the age of 18.
- 34.3% (or 4,163) of all households are single-person households.
- Over a quarter of all households (26.2%) have individuals 65 years and older.

**Households by Type**

	<b>Number</b>	<b>Percent</b>
<b>Total Households</b>	<b>12,136</b>	<b>100.0</b>
Family households (families) *	7,147	58.9
With own children under 18 years	3,115	25.7
Husband-wife family	4,054	33.4
With own children under 18 years	1,364	11.2
Male householder, no wife present	783	6.5
With own children under 18 years	404	3.3
Female householder, no husband present	2,310	19.0
With own children under 18 years	1,347	11.1
Nonfamily households *	4,989	41.1
Householder living alone	4,163	34.3
Male	1,880	15.5
65 years and over	443	3.7
Female	2,283	18.8
65 years and over	1,013	8.3
Households with individuals under 18 years	3,696	30.5
Households with individuals 65 years and over	3,177	26.2
Average household size	2.37	
Average family size *	3.05	

*Source: U.S. Census Bureau, 2010*

\* "Family households" consist of a householder and one or more other people related to the householder by birth, marriage, or adoption. They do not include same-sex married couples even if the marriage was performed in a state issuing marriage certificates for same-sex couples. Same-sex couple households are included in the family households category if there is at least one additional person related to the householder by birth or adoption. Same-sex couple households with no relatives of the householder present are tabulated in nonfamily households. "Nonfamily households" consist of people living alone and households which do not have any members related to the householder.



**LaPorte County Commuting Trends**

- Reflecting job losses in the region, the number of workers commuting into and out of LaPorte County has fallen in recent years.
  - Commuters coming into LaPorte County for work declined by 33% from 2006 to 2009.
  - LaPorte County workers commuting to jobs outside the county declined by 32% from 2006 to 2009.
- The largest numbers of workers entering and leaving LaPorte County for work come from neighboring Porter County.

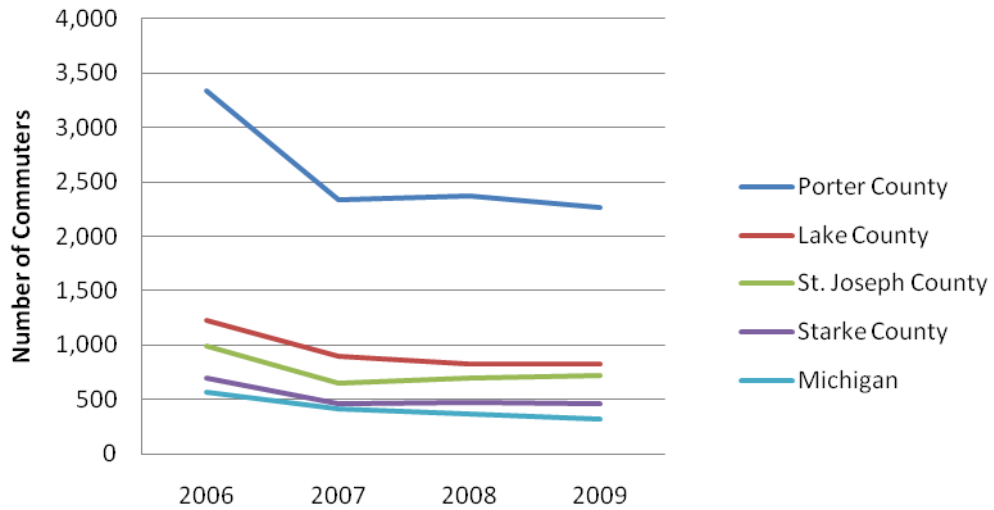
**LaPorte County Commuting Trends**

<b>Into LaPorte County</b>				
<b>From:</b>	<b>2006</b>	<b>2007</b>	<b>2008</b>	<b>2009</b>
Porter County	3,338	2,340	2,368	2,263
Lake County	1,226	897	827	822
St. Joseph County	990	646	700	716
Starke County	699	466	474	461
Michigan	<u>569</u>	<u>409</u>	<u>363</u>	<u>321</u>
Total	6,822	4,758	4,732	4,583
<b>Out of LaPorte County</b>				
<b>To:</b>	<b>2006</b>	<b>2007</b>	<b>2008</b>	<b>2009</b>
Porter County	4,085	2,751	2,790	2,737
St. Joseph County	2,684	1,829	1,734	1,646
Lake County	1,871	1,294	1,384	1,353
Illinois*	812	554	1,388	529
Michigan	<u>508</u>	<u>435</u>	<u>558</u>	<u>536</u>
Total	9,960	6,863	7,854	6,801

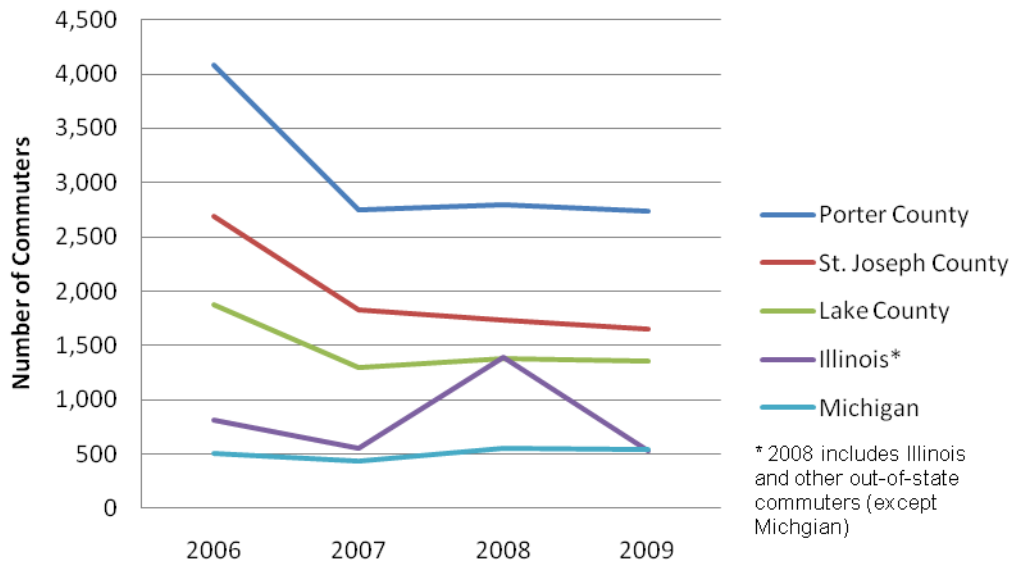
\* Categorized as Out of State in 2008 Data

Source: STATS Indiana

### Total Commuters Into LaPorte County



### Total Commuters Out of LaPorte County



Source: STATS Indiana, using Indiana IT-40 tax returns